



THE COTTAGE GROVE ROAD, SEAFORD, BN25 1TP

£420,000



This charming two bedroom detached cottage is conveniently situated in this popular grass verged tree lined road. Located about a quarter of a mile from Seaford town centre, shopping facilities, and railway station. Benefiting from a southerly aspect rear garden and off road parking.

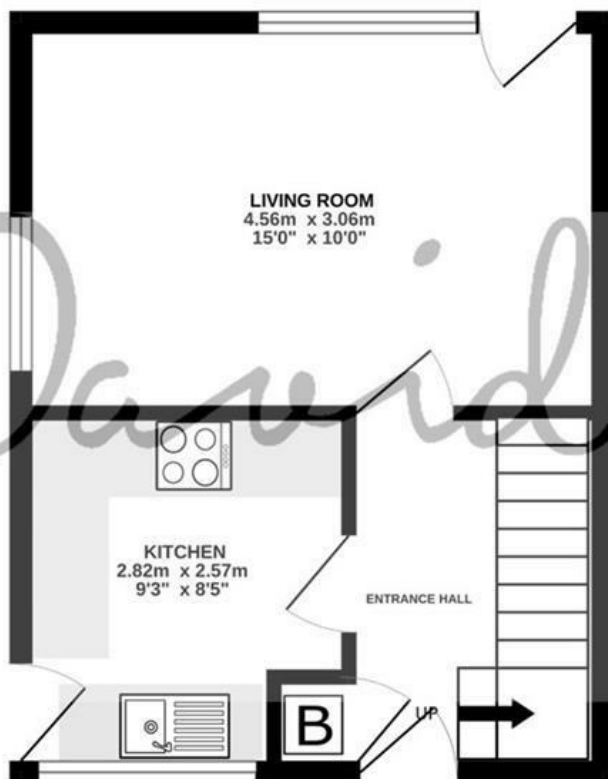
Currently consisting of kitchen, sitting room, two bedrooms and family bathroom. Planning permission has been granted for the property to be extended to the side and rear (LW/24/0130) to include three first floor double bedrooms and ground floor fourth double bedroom.

The property has gas fired central heating and part double glazed.

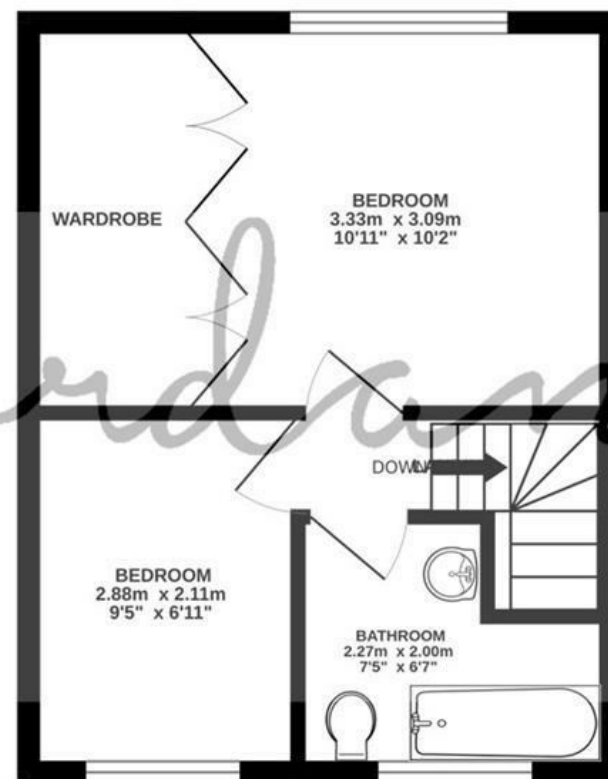
- TWO BEDROOM DETACHED COTTAGE
- SOUTHERLY ASPECT REAR GARDEN
- OFF ROAD PARKING
- KITCHEN
- SITTING ROOM
- BATHROOM
- LOCATED ABOUT A QUARTER OF A MILE FROM SEAFORD TOWN CENTRE, SHOPPING FACILITIES, AND RAILWAY STATION.
- PLANNING PERMISSION HAS BEEN GRANTED FOR THE PROPERTY TO BE EXTENDED TO THE SIDE AND REAR (LW/24/0130) TO INCLUDE THREE FIRST FLOOR BEDROOMS AND GROUND FLOOR FOURTH BEDROOM
- GAS FIRED CENTRAL HEATING AND PART DOUBLE GLAZED



GROUND FLOOR  
26.8 sq.m. (288 sq.ft.) approx.



1ST FLOOR  
26.8 sq.m. (288 sq.ft.) approx.



THE COTTAGE GROVE ROAD SEAFORD

TOTAL FLOOR AREA : 53.6 sq.m. (577 sq.ft.) approx.

Whilst every attempt has been made to ensure the accuracy of the floorplan contained here, measurements of doors, windows, rooms and any other items are approximate and no responsibility is taken for any error, omission or mis-statement. This plan is for illustrative purposes only and should be used as such by any prospective purchaser. The services, systems and appliances shown have not been tested and no guarantee as to their operability or efficiency can be given.

Made with Metropix ©2024





## COUNCIL TAX BAND

Local Authority: Lewes District Council

Council Tax Band: D

## ENERGY PERFORMANCE CERTIFICATES (EPC)

Energy Efficiency Rating: D



## DISCLAIMER

Money Laundering Regulations 2017: Intending purchasers will be asked to produce identification documentation upon acceptance of any offer. We would ask for your cooperation in producing such in order that there will not be a delay in agreeing the sale.

General: Whilst we endeavour to make our sales particulars fair, accurate and reliable they are only a general guide to the property and accordingly if there is any point which is of particular importance to you please contact the office and we will be pleased to check the position for you. Buyers must check the availability of any property and make an appointment to view, before embarking on any journey to see a property. Items shown in photographs are NOT included unless specifically mentioned within the sales particulars. They may however be available by separate negotiation.

Measurements: These approximate room sizes are only intended as general guidance. You must verify the dimensions carefully before ordering carpets or any built in furniture.

Services: Please note we have not tested any apparatus, equipment, fixtures and fittings or services and so cannot verify that they are in working order or fit for the purpose. A Buyer is advised to obtain verification from their Solicitor or Surveyor. References to the Tenure of a Property are based on information supplied by the Seller. The Agent has not had sight of the title documents. A Buyer is advised to obtain verification from their Solicitor. These particulars are issued in good faith but do not constitute representations of fact or form part of any offer or contract.

01323 898414

[sales@davidjordan.co.uk](mailto:sales@davidjordan.co.uk)

[davidjordan.co.uk](http://davidjordan.co.uk)

*David Jordan*

EST. 2004